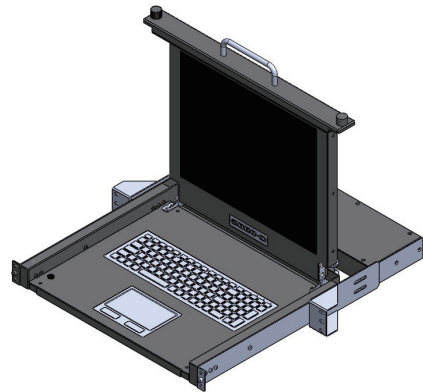


FPD-17-R-A

17 Inch Monitor for Nuclear Power Plant

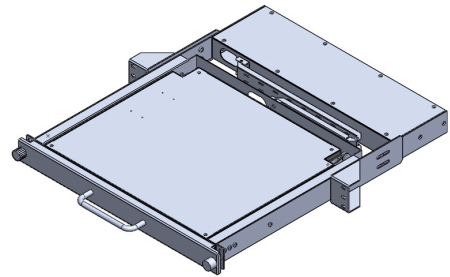
GENERAL

This specification defines the descriptions for the FPD-17-R-A Monitor. FPD series is developed for use in operator display in newclear power plant applications. FPD series are subject to strict quality tests performed both internally by RG 1.180, IEEE 344/323, IEC61000-4-2, UL94.



KEY FEATURES

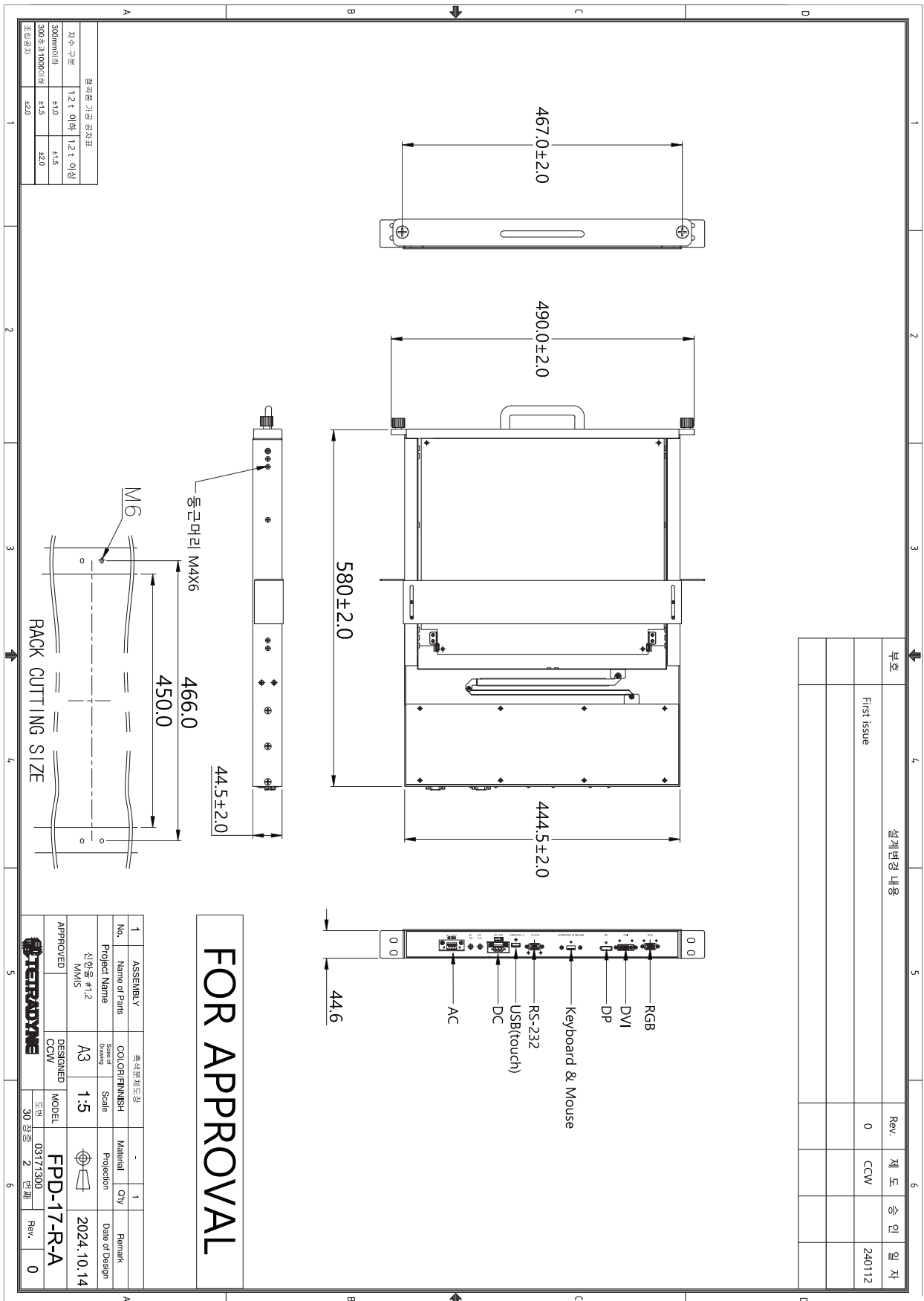
- 17 inch panel Rack Mount Type
- 1280 X 1024, 800 X 600 resolutions
- Digital DVI, Analog VGA, DP Input Signal
- Power Range : 120VAC \pm 20% 50/60Hz, 24VDC \pm 10%



GENERAL FEATURE

Section	Specifications
Viewable Size	17 inch diagonal
Active Area	337.9 mm(H) x 270.3 mm(V)
Resolution	1280 X 1024, 800 X 600
Pixel Pitch	0.264 x 0.264
Asepect Ratio	4 : 3
Response Time	Less than 35ms
Brightness	More than 800nit
Contrast Ratio	More than 800:1
Viewable Angle	V/H 170°, L/R 170°
Max Colors	16.7 Million colors
Optimal Resolution	1280 X 1024, 800 X 600
Input Signal	1 x VGA, 1 x DP, 1 x DVI, (1 x RS232, 1 x USB for Touch Panel)
Power Specification	120VAC \pm 20% 50/60Hz(IEC Standard AC Inlet), 24VDC \pm 10%
Power Consumption	Less than 35W
Product Dimensions	482.0 \pm 2.0 x 560.0 \pm 2.0 x 44.5 \pm 2.0(mm)
Operation Conditions	0°C ~ 50°C
Storage Conditions	-30°C ~ +60°C
Product Weight	12.8kg (\pm 0.5)
Package Weight	16.3kg (\pm 1.0)
Touch Screen	Capacitive Touch Screen Serial(DB9), USB AG Glass Haze 7% \pm 4 OS Support (QNX6.3.2, 6.5, 7.1 / Windows 10, 11)
NOTE	The power input terminal must be able to connect to 12AWG or larger wire (including lug).
Test Approval	RG 1.180, IEEE 323/344, IEC61000-4-2, UL94

• FPD-17-R-A



Rev.	제 도	승 인	일 지
0	CCW		240112

• FPD-17-R-A

