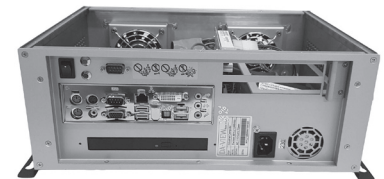
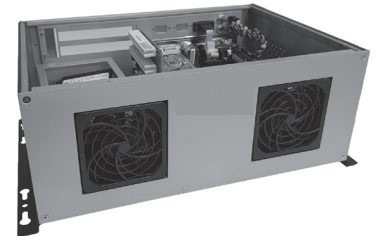


# TD-H81-2S-01

## Specification

Spec item		Description
Form factor	Motherboard Form Factor	Mini-ITX
System	CPU	Intel® Core i3-4160 [3.6GHz]
	Chipset	Intel® H81
	Memory	Samsung SO-DIMM DDR3 4G PC3-12800
	CPU Socket	FCLGA1150
I/O Interface	Ethernet	Dual LAN : Intel® 1211-AT PCIe Controller
	Digital I/O	8-bit Digital I/O
	Display	1 x VGA (up to 1920 x 1200 @ 60Hz)
		1 x DVI-D (up to 2560 x 1600 @ 60Hz)
Audio	Realyek ALC662 HD Audio codec	
Power	Power Supply	1U 250W FLEX ATX Power Supply
Environment	Operating Temperature	-10°C ~ 60°C
	Humidity	5% ~ 95%, non-condensing
Storage	Storage	Samsung 850 PRO 256GB
CPU Cooler	CPU Cooler	CF-1156D : Low Power Cooler
I/O Interface	I/O Interface	2 x RS-232 [Pin header : 3 x RS232 & 1 x RS422/485]
		1 x VGA & 1 x DVI-D
		1 x LPT
		2 x USB 3.0 & 2 x USB 2.0
		2 x SATA 6Gb/s, Dual Gbe LAN Port
		Riser Card : 2 x PCI to 1 x PCI-Ex
Component	ODD	LiteOn DVD-MULTI
Weight	Weight	4.5 Kg



### 형 식

## TD-H81-2S-01

2-slot Mini-ITX Size industrial PC

350 x 250 x 135